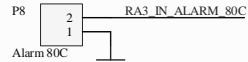
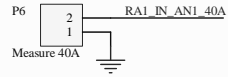
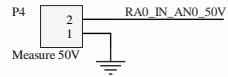
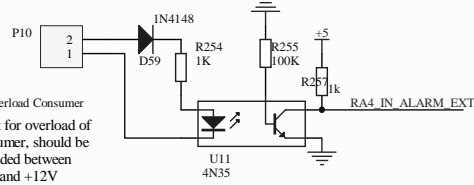


PowerSupply CPU v1.0 20110615

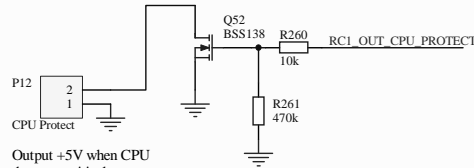
by Ivan Dachev and LZ2GL



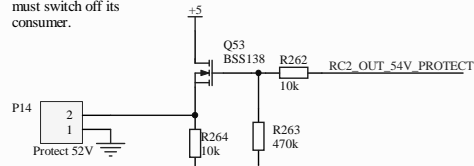
Input for alarm at 80C of internal temperature, on +5V/off 0V



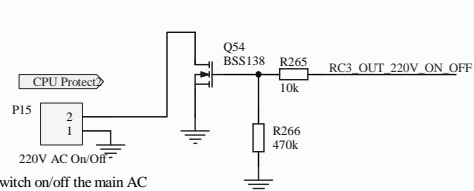
Input for overload of consumer, should be provided between +5V and +12V



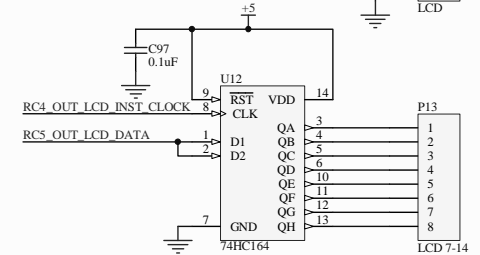
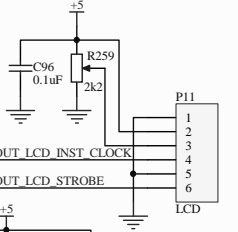
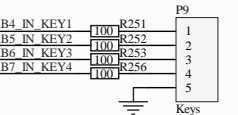
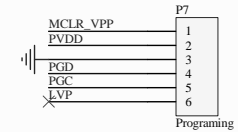
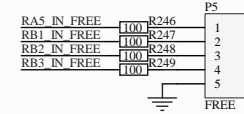
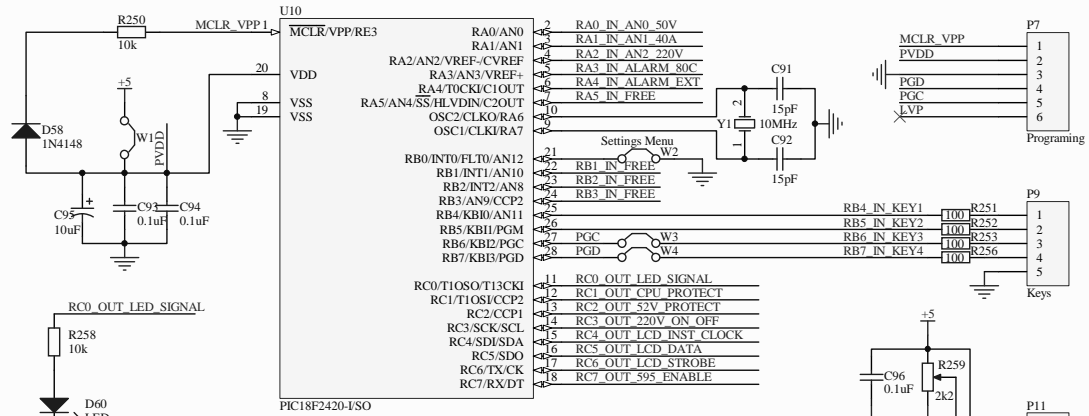
Output +5V when CPU detects a critical event where the power supply must switch off its consumer.



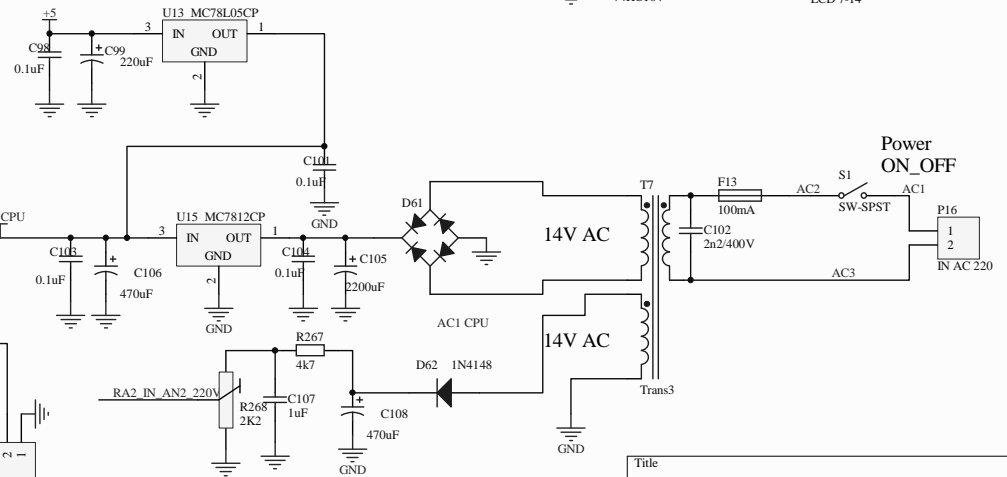
When CPU detects voltage over 52V or other critical event it provides +12V on this output, by default it will be 0V.



Switch on/off the main AC 220V of the power supply. When CPU detects a critical event then it will switch off.



Ako isklucim zahrenvaneto i evkluchil ventilatora za ohladjane releto K7 blokira klucha za zahrenvane na cu i zahrenvaneto seiskluchva avtomatichno sled kato se ohladi pod40C



Power ON_OFF

Title		
Size	Number	Revision
A3		
Date:	06.7.2014	Sheet of
File:	C:\Documents and Settings\...PowerSupply	1/1